



CORPORATE PROFILE

A large, modern, light-colored building with a distinctive architectural style featuring vertical fins and a sloped section. The building is set against a blue sky with scattered white clouds. In the foreground, there are some palm trees and a paved area with some construction equipment.

BUILDING SUSTAINABLE AND THRIVING COMMUNITIES

建立永续繁 荣的社区

Government Ministry Complex (Ministry of Interior), Qatar
内政部, 卡塔尔



CONTENTS 内容

introduction 前言

- 07 Retelling our story: Background of WCT
重温我们的故事: WCT 崛起事迹
- 07 WCT Berhad
WCT 有限公司
- 07 WCT Land Sdn Bhd
WCT 置地私人有限公司

achievements 成就

- 12 Awards
奖项

philosophy 理念

- 09 Core Values
核心价值
- 09 Vision
愿景
- 09 Mission
使命

core business 核心业务

- 14 Engineering and Construction
工程及建筑
- 50 Property Development
房地产发展
- 67 Investment and Management
投资及管理



Night view of the **Yas Marina Circuit**, Abu Dhabi, U.A.E.
Yas Marina 赛车场夜景, 阿布扎比, 阿联酋。

INTRODUCTION 前言

The company's first machine has been operational since 1981.
WCT第一部挖泥机自1981年以来依旧正常运作。

Retelling Our Story

The WCT story began on 14 January 1981 with the incorporation of WCT Earthworks & Building Contractors Sdn Bhd, a humble one-machine company specialising in earthworks. After many years of industry experience, the company successfully established a stronger presence and a solid reputation. Following this, the company was listed on the Kuala Lumpur Stock Exchange in 1995.

As WCT continued to grow in prominence, the company successfully reorganised its corporate structure on 8 July 2013 under a listed investment holding company, WCT Holdings Berhad (WCT).

Under the new structure, WCT operates through two subsidiaries – WCT Berhad, which is primarily involved in engineering and construction and WCT Land Sdn Bhd which is mainly involved in property development and investment and management activities.

Over the years, WCT has evolved into a global brand known for its reliability and capabilities. Our ability to deliver first class products and services has transformed WCT into a well-known industry heavyweight. With a workforce of over 2,000 dedicated personnel and a large fleet of plant and machinery, the company's global presence can be seen in Malaysia, Qatar, U.A.E., Bahrain, India and Vietnam.

重温我们的故事

1981年1月14日，WCT *Earthworks & Building Contractors* 私人有限公司，一家仅拥有一部机器、专注在土木工程的公司悄悄诞生及崛起。经过多年的努力及考验，一步一脚印发展的 WCT *Earthworks & Building Contractors* 私人有限公司，一点一滴地累积了丰富的业界经验，成功在市场占有一席之地及建立良好的声誉。公司更于1995年在吉隆坡证券交易所上市。

WCT 从默默无闻的公司，渐渐成为赫赫有名的上市企业。在2013年7月8日，WCT 成功重组企业架构，成立 WCT 控股公司 (WCT)。

在全新的企业架构之下，WCT 控股公司旗下的两大臂膀 – WCT 有限公司，主要专注在工程及建筑、则 WCT 置地私人有限公司，主要专注在房地产发展，投资及管理项目。

多年来，凭着努力不懈及持续奋斗的精神，WCT 蜕变成为一家出众的国际品牌企业，拥有提供世界级水平品质与服务的卓越能力，成为全球重量级企业之一。WCT 的事业版图，从立足马来西亚，至今已延伸至全球各地，包括卡塔尔、阿联酋、巴林、印度及越南，拥有超过两千名专才以及庞大的机械设备。

WCT Berhad

WCT Berhad, the Engineering and Construction Division of WCT Group, specialises in a wide range of services including earthworks, highways, expressways, rail-based infrastructure works, airports, seaports, dams, and water supply scheme, as well as commercial buildings such as government offices, shopping malls and hotels. With a track record of over 400 successfully completed projects, including design and build projects valued at approximately RM40 billion, our expertise is recognised in both local and international ventures.

1999 marked a significant year for WCT as we expanded to India, followed by the Middle East in 2002, establishing our presence on the global stage. We are proud to be one of the contractors to have participated in most of the nation building projects such as F1 racing circuits, urban railway schemes such

as the MRT2 and LRT3, and landmarked high-rise buildings in the heart of Kuala Lumpur. WCT will continue to advance its skills and expertise in new areas to support the development of Malaysia.

WCT Land Sdn Bhd

WCT Land Sdn Bhd is the Property Development and Investment & Management Division of WCT Group. With presence in the Greater Klang Valley, Iskandar region of Johor, as well as in Kota Kinabalu, Sabah, WCT Land Sdn Bhd has an impressive portfolio of townships, luxury homes, high-rise residences, integrated commercial developments, office towers, hotels and shopping malls.

To date, WCT Land Sdn Bhd has delivered more than 18,000 units of residential and commercial properties amounting to a Gross Development Value (GDV) of over RM6 billion.

WCT 有限公司

WCT 有限公司是 WCT 集团的工程及建筑臂膀，专注于提供广泛的服务，包括土木工程、高速公路、铁路基础设施工程、机场、海港、水坝和供水计划，以及政府办公楼、购物中心和酒店等商业建筑。我们成功完成了超过400个项目，其中包括价值约400亿令吉的设计和建造项目。这使我们的专业知识和经验受到广泛认可。

1999年对WCT来说具有重大意义，我们不仅扩展到印度，而且随后于2002年扩展到中东，在全球舞台上确立了自己的地位。我们很荣幸能参与众多国家建设项目，例如 F1 赛车场、MRT2 和 LRT3 等城市铁路

计划，以及吉隆坡市中心的地标性高层建筑。WCT 将继续提升其在新领域的技能和专业知识，以支持马来西亚的发展。

WCT 置地私人有限公司

WCT 集团的房地产发展及管理臂膀 – WCT 置地私人有限公司的业务分布在 巴生河流域、柔佛依斯干达及沙巴亚庇，发展项目多元化并取得卓越成就，包括发展 城镇、高尚住宅、高楼住宅、综合商业发展计划、办公大楼、酒店及 购物商场。

至今，WCT 置地私人有限公司 已成功完成超过1万8千间住宅及商业单位，发展总值超过60亿令吉。

PHILOSOPHY 理念

An aerial view of the Government Ministry Complex, Qatar worksite showing the early stages of construction.
卡塔尔政府大厦初期发展阶段的工地鸟瞰图。

Winning through Commitment and Teamwork built upon the foundation of Humility and Respect

At WCT, our beliefs are built upon our 5 core values:

WINNING

Exceeding our best

COMMITMENT

Passionate in all we do

TEAMWORK

All for one, one for all

HUMILITY and RESPECT

Our way of life

集团的**成功**在于遵守**承诺**以及拥有绝佳的**团队精神**，并秉持**谦逊与互相尊重**的精神为立业基础

WCT的信念建立在5大核心价值：

成功

超越自我

承诺

对任何事都充满热忱

团队精神

人人为我，我为人人

谦逊与尊重

为人处世之道

VISION 愿景

Excel in areas of our expertise for the betterment of the environment, economy, and society.

通过我们在专长领域里卓越的表现来改善环境、经济和社会。

MISSION 使命

Deliver quality products and services responsibly, exceeding customer expectations.

以负责任的方式提供超越客户期望的优质产品与服务。

Create a safe and nurturing workplace for a diverse, equitable and inclusive workforce.

创造安全并具培育性的工作环境，以培养多元化、公正和包容的劳动力。

Leverage on technology and innovation for greater efficiency and productivity.

利用科技和创新来提高效率和生产力。

Uphold good corporate governance and deliver shared return to all stakeholders.

致力于实践良好的公司治理系统，与所有利益相关者共享盈利。

Inspire ideas and provide solutions in synergy with nature.

激发创意并提供与大自然相辅相成的解决方案。

Contribute towards achieving national social and economic objectives to improve livelihoods.

为达到国家社会和经济目标作出贡献，以改善民生。

Our ongoing commitment in providing quality services is recognised by an extensive number of local and international organisations. These awards and achievements represent how far we have come in the industry, serving as a symbol of our technical expertise and commitment in delivering dependable products.

我们持续兑现世界级水平服务的承诺，成功被国内外机构广泛认可及赞扬。我们所获的奖项及成就，反映了我们具备多年来能在市场屹立不倒的实力，并视奖项为我们的技术专才及提供可信赖产品的标志。

ACHIEVEMENTS 成就





In July 2023, The Maple Residences in WCity OUG, Kuala Lumpur was awarded a provisional Bronze in the Residential Category by GreenRE Sdn Bhd for its focus on Energy Efficiency, Water Efficiency, and Environmental Protection. 位于吉隆坡WCity OUG的The Maple Residences 在2023年7月因其在能源效率、水资源利用效率和环境保护方面的关注，荣获了GreenRE私人有限公司所颁发的住宅类别铜级临时认证。



WCT Malls was awarded the prestigious Marketing Initiative of the Year at the Retail Asia Awards 2023. The award recognises the malls' effort in launching the Voucher Bonanza Sales (VBS). WCT购物商场在2023年《亚洲零售》大奖中荣获了年度营销创新奖。该奖项主要为了表彰WCT购物商场所推出的电子优惠券 (Voucher Bonanza Sales) 促销活动。



In November 2023, WCT Land emerged as the biggest winner at the 10th PropertyGuru Asia Awards Malaysia in partnership with iProperty.com.my with a total of 9 golden awards including the top nod as Malaysia Best Developer. 在2023年11月的第10届马来西亚PropertyGuru亚洲房地产与iProperty.com.my携手大奖中，WCT Land私人有限公司成为最大赢家，共荣获了9项金奖，其中包括马来西亚最佳开发商这项最高荣誉。



WCT Berhad achieved 640,000 Safe Man-Hours without Lost Time Injury (LTI) and 410,000 Safe Man-Hours without Lost Time Injury (LTI) for its work in Package V204 and Package S204 of the MRT Putrajaya Line Project as of 25 May 2022.

截至2022年5月25日为止，WCT有限公司在捷运布城线的V204工程和S204工程中分别实现了640,000和410,000个安全工时（LTI）。



WCT Holdings Berhad was awarded the Sustainability & CSR Awards 2022 – Company of the Year under the Engineering, Construction, and Property Development category at the Sustainability & CSR Malaysia Awards 2022. The award is in recognition of WCT's community support initiatives of RM2.8million throughout FY2021.

WCT控股有限公司在2022年马来西亚可持续发展与企业社会责任奖中荣获工程、建筑和房地产开发类别的2022年马来西亚可持续发展与企业社会责任奖的年度公司。该奖项是对WCT在2021财政年度所贡献的280万令吉的社区支持计划的认可。



In June 2022 Première Hotel, Klang received the BeSS (Bersih, Selamat dan Sihat) certification from the Ministry of Health for three of its outlets, namely The Buzz, Royal Gourmet and Ichi Poolbar. 巴生 Première Hotel 中的三间餐饮店，即 The Buzz、Royal Gourmet 和 Ichi Poolbar 在2022年6月获得了卫生部颁发的 BeSS (Bersih, Selamat dan Sihat — 清洁、安全、健康) 认证。

Industry Awards 工业奖项

Malaysian Construction Industry Excellence Awards by Construction Industry Development Board (CIDB)
Builder of the Year Award – 2018 & 2002
WCT Berhad

International Achievement Award

Ministry of Interior (MOI), Qatar – 2018
Yas Marina Circuit, U.A.E. – 2010
Bahrain International Circuit, Bahrain – 2004

Green Building Award – 2018

Ministry of International Trade & Industry (MITI)
Headquarters, Kuala Lumpur, Malaysia

Contractor of the Year Award – 2010

Kota Kinabalu International Airport,
Sabah, Malaysia

Special Project Award – 2001

Sepang F1 Circuit, Selangor, Malaysia

Safety and Health Assessment System in Construction (SHASSIC) Achiever

5-Star Rating – 2020
MRT2 Package V204: Construction and Completion of Viaduct Guideway and Other Associated Works from Bandar Malaysia South Portal to Kampung Muhibbah

5-Star Rating – 2019

MRT2 Package S204: Construction and Completion of Elevated Stations and Other Associated Works at Kuchai Lama and Taman Naga Emas

5-Star Rating – 2019

West Coast Expressway, (Taiping – Banting), Malaysia

PropertyGuru Asia Property Awards (Malaysia)

Best Mid-End Condo/ Apartment Development (Central) – 2020

Waltz Residences, WCity OUG @ Kuala Lumpur, Malaysia

Highly Commended – Best Condo/ Apartment Development (Southern) – 2020

Paradigm Residence, Johor Bahru, Johor, Malaysia

Asia Pacific Property Awards

Winner - Residential High Rise Development 2020 – 2021

Waltz Residences, WCity OUG @ Kuala Lumpur, Malaysia

PropertyGuru Asia Property Awards in partnership with iProperty.com.my

People's Choice Awards (2022)

WCT Land Sdn Bhd

People's Choice Awards (2023)

WCT Land Sdn Bhd

Best Developer (Malaysia) – 2023

WCT Land Sdn Bhd

Best Developer (Central) Malaysia – 2023

WCT Land Sdn Bhd

Best Mix Used Developer (Malaysia) – 2023

WCT Land Sdn Bhd

Best High-End High-Rise Development (Southern) – 2023

Greenville Residences, Johor Bahru

Best Luxury High-Rise Architecture Design – 2023

Pavilion Mont' Kiara

Best High-Rise Landscape Design – 2023

Pavilion Mont' Kiara

Best Luxury High-Rise Development (Central) – 2023

Pavilion Mont' Kiara

Special Recognition in CSR – 2023

WCT Land Sdn Bhd

Special Recognition in Sustainable Design & Construction – 2023

WCT Land Sdn Bhd

5-star – Best Residential Development Malaysia 2016 – 2017

d'Laman Greenville, Klang, Selangor, Malaysia

Highly Commended – Architecture Multiple Residence Malaysia 2016 – 2017

d'Laman Greenville, Klang, Selangor, Malaysia

Highly Commended – Residential High-rise Architecture Malaysia 2015 – 2016

The Azure Residences Paradigm Petaling Jaya, Selangor, Malaysia

Property Insight Prestigious Developer Awards (PIPDA)

Top 10 Developers Award – 2016

WCT Land Sdn Bhd

QLASSIC Excellence Awards

High QLASSIC Achievement Award – 2016

Ministry of International Trade & Industry (MITI)
Headquarters, Kuala Lumpur, Malaysia

Travellers Choice Award – 2022 & 2020

Première Hotel, Klang, Selangor, Malaysia

Awarded by TripAdvisor

International Safety Awards 2023

Pass – WCT Berhad

Awarded by British Safety Council

Retail Asia Awards 2023

Marketing Initiative of the Year – WCT Malls

Awarded by Retail Asia Magazine

Marketing Excellence Awards 2023

Silver Award - Best Shopper/Retailer Experience

Awarded by MARKETING Magazine

The Institute of Engineering, Malaysia (IEM) Awards 2024

Contribution to Engineering Industry in Malaysia - WCT Berhad

Awarded by IEM

Global Brands Magazine Awards 2024

Excellence in Mall Management Award Best Retailer Collaboration Award

Awarded by Global Brands Magazine

The BrandLaureate Property Brand Awards - 2024

Winner of The BrandLaureate Brand Leadership Award in Malls Management

Selena Chua, CEO Retail, WCT Malls Management Sdn Bhd

Winner of The Property Landmark Branding Award in Airport Retail and Commercial Development

gateway@klia2

Corporate Awards 企业奖项

The BrandLaureate Award
Winner of the Best Neighbourhood Mall in Community Leadership Brand Award Category
Paradigm Mall Petaling Jaya

The BrandLaureate Award
Winner of the Most Valuable Brand in Engineering & Construction Category (2017/2018) & (2007/2008)
WCT Berhad

Leadership in Energy & Environmental Design (LEED) Certification
Silver Certification under LEED 2009 Core and Shell Development – 2017
gateway@klia2 Shopping Mall, Sepang, Selangor, Malaysia

Provisional GreenRE Certification
Residential Category – Bronze (2023)
The Maple Residences, WCity OUG @Kuala Lumpur, Malaysia. Awarded by GreenRE Sdn Bhd

Residential Category – Silver (2024)
Pavilion Mont' Kiara, Kuala Lumpur. Awarded by GreenRE Sdn Bhd

Green Building Index (GBI)*
Gold Award
Ministry of International Trade & Industry, Malaysia (MITI) Headquarters, Kuala Lumpur, Malaysia

Silver Award
Lot 2C5, Putrajaya, Malaysia

KLCC Group of Companies HSE Awards
Contractor Building & Infra Category Gold Award for Excellent Health, Safety & Environment Management System – 2013 Silver Award for Effective Health, Safety & Environment Management System – 2011
WCT Berhad

Sustainability & CSR Malaysia Awards
Company of The Year Award under the Engineering, Construction and Property Development category – 2022
WCT Holdings Berhad

Company of The Year Award for Community Sports Development in the Engineering, Construction & Property Development Category - 2020
WCT Holdings Berhad

Client's Recognition 客户认可

Awarded by MMC Gamuda KVMRT (PDP SSP) Sdn Bhd
640,000 Safe Man-Hours without Lost Time Injury (LTI) as of 25 May 2022
MRT Putrajaya Line Project, Package V204

410,000 Safe Man-Hours without Lost Time Injury (LTI) as of 25 May 2022
MRT Putrajaya Line Project, Package S204

Contribution to MMC Gamuda's 5-STAR rating for Design and Construction
MRT Putrajaya Line Project, Package V204 and S204

Awarded by Putrajaya Holdings Sdn Bhd
HSE Certificate of Recognition – Gold Award
Excellent Achievement of 4 million Man Hours without Lost Time Injury (LTI) for Lot 2C5, Putrajaya, Malaysia
17 July 2013 – 9 November 2016

Environmental Best Practice (EBeP) Awards – 2015
Best Waste Minimisation Programme by Contractor for Lot 2C5, Putrajaya, Malaysia

Awarded by Petronas Refinery & Petrochemical Corporation
Focused Recognition Award 2016 – Compliance to High HSE Standards
Petronas RAPID Pengerang Projects Package 14-0302/0303/1702/0401

12 Million Safe Man Hours without any Lost Time Injury (LTI)
Petronas RAPID Pengerang Projects Package P20C1, Package 14-0401, Package 14-1702, Package 14-0302 & Package 14-0303
18 March 2018 to 5 November 2018

Awarded by Lusail Real Estate Development Company
5 Million Man Hours without Lost Time Injury (LTI)
20th October 2015 - 30th November 2016

Awarded by Lusail City
HSE Certificate of Recognition - 2015
Most Improve HSE Performance

Environmental Champion Award – 2016

Awarded by Overseas Bechtel Incorporated (OBI)
28 Million Accident Free Man Hours
New Doha International Airport (NDIA), Doha, Qatar
May 2012

Note: The above GBI Ratings were obtained as part of WCT's involvement in the construction of the buildings.

注：上述GBI评级是WCT在建筑建设上获得的认证。

ENGINEERING AND CONSTRUCTION

工程及建筑

MRT2 V204 – WCT successfully constructed a pair of 60m pipe arch underpasses under the live traffic of the KL-Seremban Highway using micro-tunnelling and pipe-jacking methods.
捷运2 V204 — 通过采用微型隧道和顶管方案, WCT成功在无需停止隆芙大道 (KL-Seremban Highway) 实时交通的情况下建造了一对长达60米的管拱地下通道。

Constructing The Future

WCT's journey embarked with humble earthworks, which form the bedrock of construction. Through relentless dedication and perseverance, WCT has evolved into an esteemed industry titan.

Bolstered by a committed workforce and an expanding fleet of cutting-edge machinery, the group engages in groundbreaking collaborations with international giants and top-tier consultants on monumental endeavours. With a rich legacy spanning over 40 years across various construction domains, WCT's expertise extends to highways, railways, airports, seaports, dams, and water supply scheme, F1 circuits, and avant-garde architectural marvels.

With a distinguished portfolio, the group proudly showcases three award-winning F1 circuits and an impressive track record of constructing over 500km of highways and expressways, spearheading five airport projects, and numerous sustainable developments across Malaysia, India, Qatar, and Bahrain.

建设未来

WCT 在创办初期，是一家专注在土木工程 的建筑公司。多年来凭着坚定不移的毅力、努力及恒心，WCT 稳健 发展及成长，更成为国内业界最有效率及最 受信赖的承包商之一。

WCT 在效率卓越的员工支持及日益扩展的机械设备之下，该集团与国际巨头和顶级顾问进行了开创性的合作，取得了巨大的成就。至今，WCT 在多个建筑领域拥有超

Other notable achievements include the iconic Guthrie Corridor Expressway, pivotal MRT and LRT infrastructure in the Klang Valley, the state-of-the-art Kota Kinabalu International Airport, the monumental Bakun Hydroelectric Dam, the esteemed Tuaran Hospital, the Federal Government Administrative Centres, the iconic gateway@klia2, and the prestigious City Centre Bahrain.

WCT's recent undertakings underscores its commitment to nation-building endeavours, including TRX Infrastructure and Roadway works in Malaysia's first dedicated international financial district, transformative projects such as the Sarawak Pan Borneo Highway and pivotal Sultan Ismail Petra Airport in Kelantan, Malaysia.

Looking ahead, WCT will continue to propel individuals and organisations towards unparalleled success by fostering collaboration, dedication, and a shared vision of excellence.

过40年的丰富经验，其专业知识涵盖高速公路、铁路、机场、海港、水坝和供水计划、F1赛道以及前卫的建筑奇迹。

凭借卓越的建筑项目组合，该集团不仅完成了三个屡获殊荣的 F1 赛道，还在建设超过 500 公里的高速公路、主导五个机场项目，并在马来西亚、印度、卡塔尔和巴林推进多个可持续发展项目方面取得了卓越成就。



MRT2 (V204 & S204) Bandar Malaysia South Portal to Kampung Muhibbah, Malaysia
捷运第二路线 (V204 及 S204) 马来西亚城南站至亲善村, 马来西亚

其他值得一提的发展项目有牙直利走廊大道、位于巴生谷关键的捷运和轻轨基础设施，沙巴亚庇国际机场、砂拉越巴贡水坝、沙巴斗亚兰医院、布城政府行政中心、雪兰莪 gateway@klia2 (机场购物商场) 及巴林城市中心。

WCT近年来的发展项目不仅包括了多个变革性项目，而且凸显了其对国家建设努力的承诺。这些项目包括马来西亚第一个专

门的国际金融区——TRX的基础设施和道路工程、砂拉越泛婆罗洲高速公路，以及马来西亚吉兰丹州关键的苏丹依斯迈佩特拉机场等。

展望未来，WCT 将继续通过促进协作、奉献精神 and 共同的卓越愿景，推动个人和组织实现无与伦比的成功。

F1 CIRCUITS 一级方程式赛车场



Yas Marina Circuit

Abu Dhabi, U.A.E.

Named host of the Abu Dhabi F1 Grand Prix, this 5.554 kilometre state-of-the-art circuit is WCT's third successful venture into the revolutionary world of racing circuits. Completed in 2009, the RM4.3 billion project was awarded the Malaysian Construction Industry Excellence Award under the International Achievement Award category by CIDB Malaysia in 2010.

Yas Marina 赛车场

阿布扎比, 阿联酋

单圈长度5.554公里、设备先进的赛车场是阿布扎比举办大奖赛的地点，象征着 WCT 第三度在具有革命性的赛车世界，再度取得成功。建筑工程合约高达43亿令吉的阿联酋阿布扎比 Yas Marina 赛车场是在2009年竣工，WCT 也凭着这一项目，赢得由马来西亚建筑工业发展局所颁发的2010年大马建筑业卓越奖的国际成就大奖。



Bahrain International Circuit, Bahrain
巴林国际赛车场, 巴林



Sepang International Circuit, Selangor, Malaysia
雪邦国际赛车场, 雪兰莪, 马来西亚

RAILWAYS 铁路

18

MRT2 (V204 & S204)

Bandar Malaysia South Portal to Kampung Muhibbah, Malaysia

WCT was awarded two MRT Putrajaya Line contracts by Mass Rapid Transit Corporation Sdn Bhd (MRT Corp) to undertake and complete the V204 & S204 work packages. The V204 work package is one of the most challenging alignments of the MRT Putrajaya Line and includes the construction and completion of multiple long spans over major highways, viaduct guideway and other associated works from Bandar Malaysia South Portal. Package S204 includes the construction and completion of elevated stations and other associated works at Kuchai Lama and Taman Naga Emas, respectively. The work packages were awarded the highest 5-Star Rating in the SHASSIC Achiever award by CIDB Malaysia.

捷运第二路线 (V204 及 S204)

马来西亚城南站至亲善村, 马来西亚

WCT获得大众捷运系统机构私人有限公司 (MRT Corp) 授予的两份捷运布城线 (MRT Putrajaya Line) 合同, 以承担并完成V204和S204工程。V204工程是捷运布城线中最具挑战性的路段之一, 其中包括了自大马城南站 (Bandar Malaysia South Portal) 起的高架桥导轨以及其他相关工程的建造。S204工程则包括旧古仔路 (Kuchai Lama) 的高架车站以及金龙园 (Taman Naga Emas) 的其他相关工程的建造。这些工程获得了马来西亚国家建筑发展局 (CIDB) 颁发的建筑安全和卫生评估系统 (SHASSIC) 成就奖中最高 5 星评级。



LRT3 (GS03)

LRT3 (TD1, GS02 & GS03) Bandar Utama to Johan Setia, Malaysia

The Light Rail Transit Line 3 (LRT3) is a double-track rail alignment of approximately 37km covering the areas of Bandar Utama, Shah Alam and Klang before ending at Johan Setia in Klang. In 2017, WCT was awarded three LRT3 projects by Prasarana Malaysia Berhad and the projects include Package TD1 construction and completion of sub-structure works for the Johan Setia Depot (Phase 1) and associated works of LRT3; Package GS02 and Package GS03 - construction and completion guideway, stations, park and ride, ancillary buildings and other associated works from Merchant Square to Temasya Glenmarie.

轻快铁第三路线 (TD1, GS02 及 GS03) 万达镇至佐汉瑟迪亚, 马来西亚

轻快铁第三路线是一项双线铁路项目，全程长达37公里，包括了万达镇，莎亚南和巴生区，终点站为巴生的佐汉瑟迪亚。在2017年，WCT 获得马来西亚国家基建有限公司颁发的轻快铁第三路线合约。该项目包括了 TD1 工程配套 - 下部结构工程的建造和完成以及轻快铁第三路线的相关工程；GS02 配套及 GS03 配套 - 承建及完成从 Merchant 商业广场至格连玛丽的导轨、轻快铁站、停车场、辅助建筑及其他 相关工程。

ICONIC BUILDINGS / INFRASTRUCTURES 标志性基建项目

20



Government Ministry Complex (Ministry of Interior) Qatar

In 2010, the Government of the State of Qatar awarded WCT with a contract to construct, complete and maintain a Government Ministry Complex (Ministry of Interior) in Qatar. The building features high quality finishing while meeting international quality assurance and control standards. This RM1.96 billion project was awarded the Malaysian Construction Industry Excellence Award under the International Achievement Award category by CIDB Malaysia 2018.

内政部 卡塔尔

卡塔尔政府在2010年委任 WCT 建筑、完成及维修卡塔尔内政部大楼。符合国际品质保证及检验标准的卡塔尔内政部大楼，也披着上高质量的内部装潢材料。凭这项19.6亿工程，WCT 荣获马来西亚建筑工业发展局所颁发的2018年大马建筑业卓越奖的国际成就大奖。





City Centre Bahrain Bahrain

This RM1.6 billion project was completed in September 2008. The scope of works included the construction of the largest shopping complex in Bahrain, a multi-storey car park building, hotels, a theme park, a water park and 20 cineplexes.

城市中心巴林 巴林

这项建筑工程合约高达16亿令吉打造的项目是在2008年9月完成，所涉及的工程范围包括在巴林建立最大型购物广场、多层停车场、酒店、主题乐园、水上乐园及20间电影院。



Yas Marina Royal Yacht Club, Abu Dhabi, U.A.E.
Yas Marina 皇家游艇俱乐部, 阿布扎比, 阿联酋

DAM & WATER SUPPLY SCHEME 水坝及水供方案



Bakun Hydroelectric Dam Sarawak, Malaysia

The Bakun Hydroelectric Dam is the second highest Concrete Faced Rockfill dam in the world. WCT was part of the consortium that constructed and completed this main civil works contract worth approximately RM3 billion. WCT was responsible for the construction of the main dam, permanent roads and associated works.

巴贡水坝 砂拉越, 马来西亚

巴贡水坝是全球第二高的混凝土面板堆石坝水坝。WCT 及其他联营财团获得总值 30 亿令吉的建筑工程合约，主要负责土建工程。WCT 负责兴建主水坝、永久道路以及相关维修工作。



Kudat Water Supply Scheme Milau Dam, Sabah, Malaysia
古达水供方案米劳水坝, 沙巴, 马来西亚

AIRPORTS 机场



Kota Kinabalu International Airport Sabah, Malaysia

This project involved the upgrading and expansion works of the Kota Kinabalu International Airport's terminal building, landside infrastructure and facilities on a design-and-build basis. The project was built to serve 9 million passengers per annum. The airport was completed on 4 March 2010 at a final contract sum of RM720 million. Following the successful completion of this airport, WCT was awarded the Contractor of the Year Award by CIDB Malaysia at the Malaysian Construction Industry Excellence Award 2010.

亚庇国际机场 沙巴, 马来西亚

亚庇国际机场的提升与扩建工程，包括机场第一航站楼、陆侧基本设施，以及设计及建造基础设备。这项工程旨在应付每年900万乘客人次。亚庇国际机场提升及扩建工程是在2010年3月4日竣工，建筑工程合约约为7亿2千万令吉。随着出色地完成亚庇国际机场提升及扩建工程，WCT 获得马来西亚建筑业发展局所颁发的2010年大马建筑业卓越奖的年度承包商大奖。



Sultan Ismail Petra Airport

Pengkalan Chepa, Kota Bharu, Kelantan, Malaysia

In 2021, WCT was awarded a main contract to undertake the proposed extension and upgrading of the Sultan Ismail Petra Airport in Kota Bharu, Kelantan. The contract involves the building works, landside infrastructure works, airside infrastructure works and all engineering works for the design, construction, supply, installation, completion, testing, commissioning and maintenance of the existing Sultan Ismail Petra Airport. Phase 1 of the airport was completed on 30 April 2024.

苏丹依斯迈布特拉机场

马来西亚吉兰丹哥打巴鲁彭卡兰·切帕

WCT在2021年获得了一份主要合同，负责扩建和升级吉兰丹哥打巴鲁的苏丹依斯迈布特拉机场。该合同涉及现有苏丹依斯迈布特拉机场的建筑工程、陆侧基础设施工程、空侧基础设施工程以及所有设计、建造、供应、安装、完成、测试、调试和维护的工程。机场第一期工程于2024年4月30日竣工。





1 gateway@klia2
(Airport Mall), Sepang,
Selangor, Malaysia
gateway@klia2 (机场购物商
场), 雪邦,
雪兰莪, 马来西亚

2 KLIA Terminal 2, Selangor,
Malaysia
吉隆坡国际机场第2号航站,
雪兰莪, 马来西亚

3 KLIA Terminal 1, Selangor,
Malaysia
吉隆坡国际机场第1号航站,
雪兰莪, 马来西亚

4 Hamad International
Airport (formerly known
as New Doha International
Airport), Qatar
哈马德国际机场 (原名为新多
哈国际机场), 卡塔尔



EXPRESSWAYS & HIGHWAYS 高速大道及公路

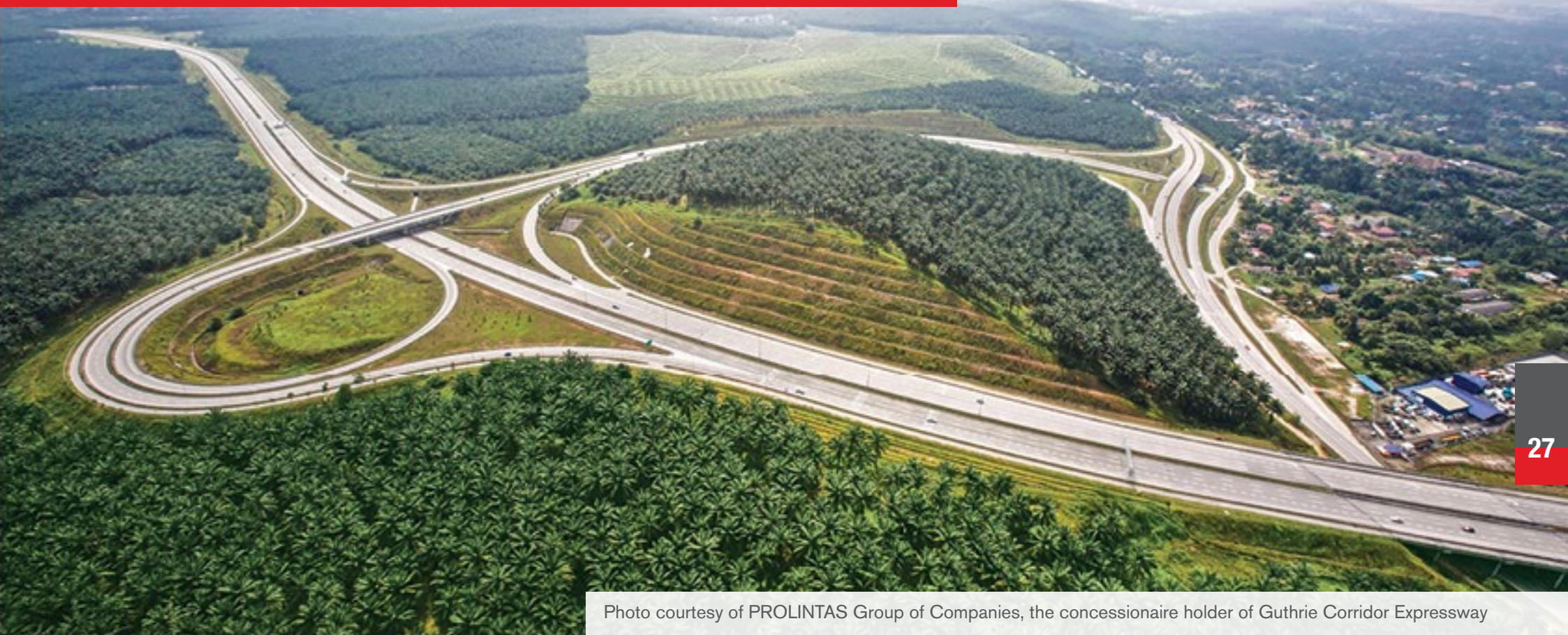


Photo courtesy of PROLINTAS Group of Companies, the concessionaire holder of Guthrie Corridor Expressway

Guthrie Corridor Expressway Malaysia

The Guthrie Corridor Expressway (GCE) is a 25km dual three-lane open toll system expressway that connects the Jelutong–North–South Klang Valley Expressway (NKVE) to the Kuang Interchange along the North South Expressway (NSE). It was WCT's first local turnkey design-and-build highway project, awarded by Kumpulan Guthrie Berhad in 2001. Fully completed on 22 January 2005, this RM386 million project was awarded the Road Engineering Excellence Award 2007 by the Road Engineering Association of Malaysia.

牙直利走廊大道 马来西亚

长达25公里的牙直利走廊大道，是一项实行收费制度的双向三线行车道的高速大道，从日落洞 - 新巴生河流域大道衔接至轰埠交通枢纽及南北大道。牙直利走廊大道是 WCT 第一项国内一站式设计及建造高速大道计划，由牙直利有限公司在2001年委任 WCT 建造。这项建筑工程合约高达3亿8千600万令吉的高速大道，是在2005年1月22日竣工，而 WCT 也凭着这项计划，获得马来西亚道路工程协会所颁发的2007年道路工程卓越奖。



Dukhan Highway

Qatar

WCT was involved in the construction of this RM784 million project located in Doha, Qatar. The scope of works included the construction of road works, bridge works and ancillary works to replace the existing two-lane single carriageway.

杜罕高速大道

卡塔尔

这项建筑工程合约高达7亿8千400万令吉的高速大道位于卡塔尔多哈。WCT 负责兴建的部分包括道路工程、桥梁工程以及其他附属工程以更新原有的双向单线行车道。



Panagarh – Palsit and Durgapur Expressway

India

The Panagarh – Palsit (KM517 to KM581) and Durgapur (KM581 to KM646) expressways form part of India's West Bengal National Highway 2. In 2002, together with a joint venture partner, WCT was awarded the projects on a Build-Operate-Transfer (BOT) basis. The scope of works included the financing, design, supervision, construction and upgrading of the existing two-lane road into a four-lane expressway.

Panagarh – Palsit 及 Durgapur 高速大道

印度

Panagarh – Palsit (第517公里至581公里)及 *Durgapur* (第581公里至646公里)高速大道是印度西孟加拉邦第二国家高速大道的一部分。在2002年联同联营伙伴，WCT 是在承建 – 营运 – 转移的方式经营下，获得 *Panagarh – Palsit* 及 *Durgapur* 高速大道工程。WCT 负责兴建的部分包括融资、设计、监督、建造，以及将原有的双线行车道提升至四线行车道。



Pan Borneo Highway (Sungai Arip Bridge – Bintulu Airport Junction) Sarawak, Malaysia

In July 2016, WCT 30:70 joint venture with Sarawak-based company secured a Works Package Contract worth RM1.3 billion for Phase 1 of upgrading of the Pan Borneo Highway in Sarawak. The contract involves the construction of the 66-kilometre dual carriageway from Sungai Arip Bridge to Bintulu Airport Junction.

泛婆罗洲高速大道 (Sungai Arip 桥至民都鲁机场交叉路口) 砂拉越，马来西亚

于2016年7月，WCT 和座在砂拉越的工程公司以30:70联营方式获得总值约13亿令吉，第一期提升砂拉越泛婆罗洲大道的工程配套合约。该合约概括承建长达66公里，从 *Sungai Arip* 桥至民都鲁机场交叉路口的双向行车道。



30

2



3



4



- 1 Elevated Highway Project, Sprint Highway (Jalan Maarof - Jalan Semantan), Kuala Lumpur, Malaysia**
提升大道工程, 吉隆坡西部疏散大道(马洛夫路 - 士曼丹路), 吉隆坡, 马来西亚
- 2 Fourth Lane Widening Works, PLUS (Nilai - Seremban Expressway), Malaysia**
新增第4条行车道, 南北大道, (汝来 - 芙蓉高速大道), 马来西亚
- 3 Karak Highway, Kuala Lumpur, Malaysia**
加叻大道, 吉隆坡, 马来西亚
- 4 North Manama Corridor Improvement Project - Al Seef Flyover and Central Market Interchange, Bahrain**
Al Seef 天桥及 *Central Market* 交通枢纽的北麦纳玛走廊提升工程, 巴林
- 5 North-South Expressway (Gopeng - Simpang Pulai Section), Malaysia**
南北大道(务边 - 新邦波赖路段), 马来西亚
- 6 LEKAS (Kajang - Seremban Highway), Malaysia**
加芙大道(加影 - 芙蓉大道), 马来西亚
- 7 North-South (PLUS) Highway Expansion: Yong Peng (North) to Senai (North) Phase 1: Senai (Utara) Sedenak (Package A)**
南北大道第一期配套工程永平:(北部)至士乃(北部)



BUILDINGS 建筑物

32



4G8 and 4G9 Putrajaya, Malaysia

The contract value of the government office buildings 4G8 and 4G9 were at RM195 million and RM262 million respectively. The buildings were constructed to house the Ministry of Rural and Regional Development and Ministry of Information, Communications and Culture. Aside from the construction and completion of these two office towers, the contract covered the proposed design, related works for both basements, as well as external works. While 4G8 is 33 storeys high, 4G9 stands slightly taller at 39 storeys. Both buildings opened their doors on 15 August 2011.

4G8 及 4G9 布城, 马来西亚

4G8 和 4G9 政府办公大楼建筑工程合约价值分别为1亿9千500万令吉和2亿6千200万令吉，以作为马来西亚乡村及区域发展部和资讯、通讯及文化部的办公大楼。除了建造这两栋政府办公大楼，该建筑工程合约还包括拟议设计、地下层相关工程及建筑物外观工程。4G8 政府办公大楼共有33层，4G9 政府办公大楼则39层，两栋政府大楼皆在2011年8月15日正式对外开放。



4G8



4G9



Ministry of International Trade and Industry

Kuala Lumpur, Malaysia

In early 2012, WCT secured a RM301 million contract to design and build the headquarters of the Ministry of International Trade and Industry (MITI) on Jalan Khidmat Usaha, Kuala Lumpur. This project consists of a 31-storey office tower, a two-storey carpark and a three-storey podium. The building achieved GBI Gold Rating with a score of 84 points and QLASSIC score of 82% and was awarded the Malaysia Construction Industry Excellence Award under the Green Building Award category by CIDB Malaysia in 2018.

国际贸易及工业部

吉隆坡，马来西亚

WCT于2012年初获得3亿1百万令吉的建筑合约，合约内容包括设计及建造位于吉隆坡 *Jalan Khidmat Usaha* 的马来西亚国际贸易及工业部总部。该项目包括一栋31层高的办公楼，两层楼停车场及三层高的台基。这建筑也获得了绿色建筑指标的黄金评级，得分为84分、建筑素质评估系统，得分为82%、并于2018年获得了由马来西亚建筑工业发展局所颁发的大马建筑业卓越奖的绿色建筑大奖。



2C5

Putrajaya, Malaysia

This RM315 million GBI Silver project involved the construction and completion of the commercial office buildings and external works at 2C5, Precinct 2, Putrajaya. This development comprises two 7-storey podium with retail units and offices, and a 7-storey office tower above the podium. It also includes a central landscaped promenade located between both towers and two levels of basement carpark.

2C5

布城，马来西亚

这项位于 2C5, *Precinct 2*，布城，而总值3亿1千500万令吉的商业办公大楼及外部工程项目是由 WCT 所承建及完成。2C5 项目包括两栋拥有7层高的台基及14层高商业枢纽及一个为大众而设的露天中央休闲通道及两层楼地下停车场。



Tuaran Hospital, Sabah, Malaysia
斗亚兰医院, 沙巴, 马来西亚



Kota Kinabalu Medical Centre, Sabah, Malaysia
亚庇医药中心, 沙巴, 马来西亚



MyTOWN Shopping Centre, Jalan Cochrane, Kuala Lumpur, Malaysia
MyTOWN 购物中心, 葛京路, 吉隆坡, 马来西亚



Police Quarters, Ulu Kelang, Selangor, Malaysia
警察宿舍, 淡江, 雪兰莪, 马来西亚



1Medini and Medini Signature Development, Bandar Medini Iskandar, Iskandar Puteri, Johor, Malaysia
1Medini 及 Medini Signature 发展计划, 依斯干达美迪尼城, 依斯干达公主城, 柔佛, 马来西亚



gateway@klia2 (Airport Mall), Sepang, Selangor, Malaysia
gateway@klia2 (机场购物商场), 雪邦, 雪兰莪, 马来西亚



Le **MERIDIEN**
PETALING JAYA



Paradigm Petaling Jaya, Selangor, Malaysia
八打灵再也佰乐泰, 雪兰莪, 马来西亚

THE
ASCENT
Corporate Office Tower

SAPPHIRE
PARADIGM
petaling jaya



Waltz Residences, Kuala Lumpur, Malaysia
Waltz Residences, 吉隆坡, 马来西亚



Impiria Residensi, Bandar Bukit Tinggi 2, Klang, Selangor, Malaysia
Impiria Residensi, 武吉丁宜镇第二区, 巴生, 雪兰莪, 马来西亚



Paradigm Mall Johor Bahru, Johor, Malaysia
新山佰乐泰商场, 柔佛, 马来西亚



- 1 The Exchange TRX (Retail), Hotel and Office**
Commercial Mixed Development
Tun Razak Exchange, Kuala Lumpur, Malaysia
The Exchange TRX (Retail)
综合商业发展工程, 酒店和办公室, 敦拉萨国际
交易中心, 吉隆坡, 马来西亚

- 2 Pavilion Damansara Heights (Parcel 1 & 2)**
Commercial Development Project,
Kuala Lumpur, Malaysia
Pavilion Damansara Heights (第一和第二期),
商业发展合约, 吉隆坡, 马来西亚

- 3 118 Mall**
Kuala Lumpur, Malaysia
118 商场
吉隆坡, 马来西亚



CIVIL WORKS 土木工程



Construction of commercial boulevard with Road A4.
建造设有A4型道路的商业大道。

Lusail Development Project

Doha, Qatar

This RM1.3 billion project (70:30 joint venture between WCT and Al-Ali Projects Co (W.L.L.)) includes the construction of the commercial boulevard, main and internal roads, utilities, four light rail transit stations and four two-level underground car parks. Lusail Development is located in Lusail City, a 38 square kilometre master-planned urban development that feature residential developments, entertainment and commercial districts including a worldclass stadium which hosted the 2022 FIFA World Cup.

卢赛尔发展计划

多哈, 卡塔尔

这项耗资13亿令吉的项目 (WCT与Al-Ali Projects Co (W.L.L.) 按70:30合资比例进行) 涵盖商业大道、主要道路与内部通道、公共设施、4座轻快铁车站和4座两层楼地下停车场。卢赛尔开发项目位于卢赛尔城, 整体发展面积为38平方公里, 涵盖住宅、娱乐和商业特区, 以及一座用于2022年FIFA世界杯的世界级足球场。



LRT station 轻快铁站



Substation 变电站



Underground Carpark 地下停车场



Jetty Extension, Sapangar Bay Oil Terminal Sabah, Malaysia

WCT was awarded a contract by Sabah Ports Sdn Bhd to undertake the jetty extension works at Sapangar Bay Oil Terminal.

The extension works includes reclamation, revetment and road works, earthwork, piling works, reinforced concrete structure works, quay furniture, pump house, mechanical, electrical, demolition and relocation of existing facilities, petroleum product transfer facility and slops collection service.

码头扩建, 实邦加湾石油港口 马来西亚, 沙巴

WCT获得沙巴港口私人有限公司 (Sabah Ports) 授予的合同, 承接位于实邦加湾石油港口 (Sapangar Bay Oil Terminal) 的码头扩建工程。

其扩建工程包括复垦、护岸和道路工程、土方工程、打桩工程、钢筋混凝土结构工程、码头设施、泵房、机械、电气、现有设施的拆除和搬迁、石油产品转运设施及污水收集服务。



Sapangar Bay Container Port Jalan Sapangar, Kota Kinabalu, Sabah, Malaysia

WCT-CCCC Joint Venture (60:40 joint venture between WCT and China Communications Construction Co (M) Sdn Bhd (CCCC) was awarded the RM899.81 million project to execute the expansion works of the Sapangar Bay Container Port.

The scope of works includes environment protection and enhancement, traffic management control, site investigation works, demolition and site clearance, dredging and reclamation works, seawall construction, quay deck, container yard, building works, external works and mechanical & electrical services.

实邦加湾货柜港口 马来西亚沙巴亚庇实邦加路

WCT-CCCC合资企业 (由WCT与中国交通建设 (马) 私人有限公司 (CCCC) 在60:40的基础上所组成的非法人合资企业) 获得8亿9981万令吉的合同, 以执行实邦加湾货柜港口的扩建工程。

其工作范围包括环境保护与提升、交通管理控制、现场勘察工作、拆除和场地清理、疏浚和复垦工程、海堤建设、码头甲板、集装箱堆场、建筑工程、外部工程和机电服务。



Tun Razak Exchange Kuala Lumpur, Malaysia

Under the Tun Razak Exchange (TRX) development in Kuala Lumpur, Malaysia, WCT was awarded with Package 3A and 3B, Lifestyle Quarter (Phase 1) and TRX Contract 2. The TRX Contract 2 involves construction of infrastructure and roadway works which includes the underground road structure, CDB Loop elevated road, Combined Utilities Tunnel and Imbi Link Tunnel. The total length of the tunnel spans 2km and 3.8km of grade roads as well as 1.5km of elevated roads.

WCT was also awarded by Affin Bank to undertake a 7-month fast track project which included earthwork, rock excavation and secant pile wall works for a 47-storey office tower.

敦拉萨国际贸易中心 吉隆坡，马来西亚

在马来西亚吉隆坡敦拉萨国际贸易中心（*Tun Razak Exchange TRX*）开发项目中，WCT获得了3A和3B工程、生活区阶段1（Lifestyle Quarter — Phase 1）和TRX合约2。TRX合约2涉及基础设施和道路工程的建设，包括地下道路结构、中央商务区（CDB Loop）高架道路、多用途隧道和伊比链接隧道（Imbi Link Tunnel）。该隧道包括全长跨越2公里和3.8公里的分级道路，以及1.5公里的高架道路。

WCT还获得艾芬银行（Affin Bank）授予的为期7个月的快道工程，其中包括一栋47层办公大楼的土方工程，岩石开挖和割桩墙工程。



Petronas RAPID Pengerang Site, Johor, Malaysia
 边佳兰马来西亚国油炼油及石油化学综合发展计划, 柔佛, 马来西亚



Medini, Bandar Medini Iskandar, Iskandar Puteri, Johor, Malaysia
 美迪尼, 依斯干达美迪尼城, 依斯干达公主城, 柔佛, 马来西亚



Vale of Brazil's Iron Ore Distribution Centre, Perak, Malaysia
 Vale of Brazil's Iron Ore 分销中心, 霹雳, 马来西亚



Kwasa Damansara Township Development, Sungai Buloh, Selangor, Malaysia
 桂莎白沙罗镇区发展, 双溪毛糯, 雪兰莪, 马来西亚

INTERIOR FIT-OUT WORKS 室內裝修工程

46



Yas Marina Royal Yacht Club Abu Dhabi, U.A.E.

This RM270 million project involved the execution and completion of the Marina Landside Facilities for the Yas Island development in Abu Dhabi, United Arab Emirates. The project features two buildings: Building 1 incorporates 5-star club amenities including restaurants, bars, lounges, function rooms, outdoor decks and a 45-metre observation tower, and Building 2 is home to retail and administration components with a waist-shaped internal glass courtyard. Completed in the fourth quarter of 2009, the Yas Marina Royal Yacht Club provides top-notch berthing facilities and symbolises the uniqueness of the luxurious marina.

Yas Marina 皇家游艇俱乐部 阿布扎比，阿联酋

这项价值2亿7千万令吉的工程合约，主要为阿联酋阿布扎比 *Yas Marina* 岛发展计划展开码头陆侧设备执行及建筑工程。这项工程包括建造一栋具备五星级设施俱乐部的大楼，内有餐馆、酒吧、贵宾厅、会议室、户外观景区及45米长的瞭望台，以及一栋采用腰形玻璃设计的内部庭院之零售及行政大楼。这项工程是在2009年第四季竣工，*Yas Marina* 皇家游艇俱乐部所能提供的顶级游艇停泊设备，充分展示出奢华码头的独有特征。



48

4G8 & 4G9

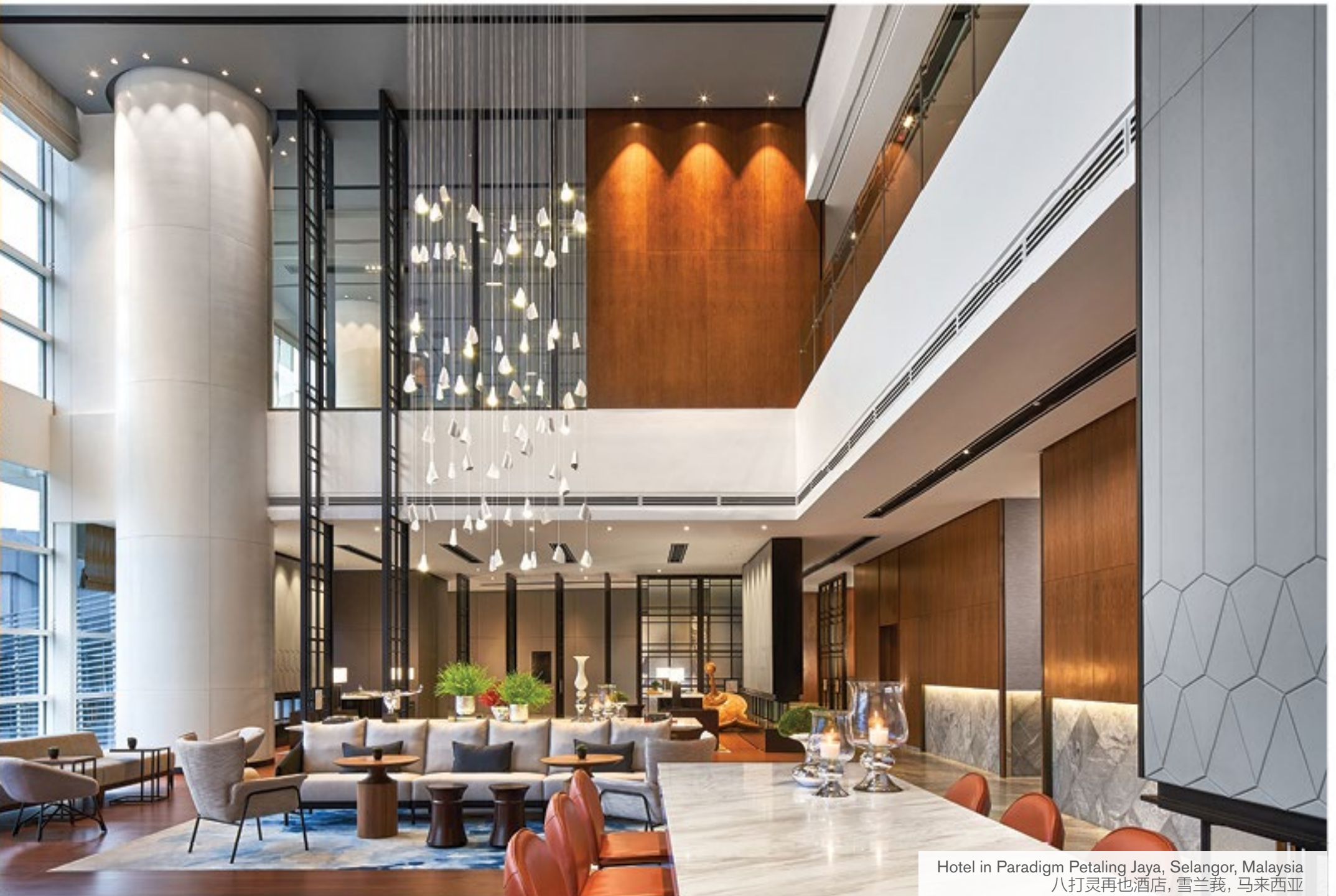
Putrajaya, Malaysia

This project was part of the RM195 million and RM262 million government office buildings project. The fit-out works included the provision of system furniture, customised joinery works and carpet tiles.

4G8 & 4G9

布城，马来西亚

这项室内装修工程是建筑工程合约高达1亿9千500万令吉和2亿6千200万令吉、兴建政府办公大楼的一部分，包括供应系统家具配备、定制细木工程及地毯砖。



Hotel in Paradigm Petaling Jaya, Selangor, Malaysia
八打灵再也酒店, 雪兰莪, 马来西亚

PROPERTY DEVELOPMENT 房地产 发展

Developing A Balanced Lifestyle

WCT's years of experience as a contractor has led to our expansion into property development. In 1997, the group launched Bandar Bukit Tinggi, our first integrated township development project in Klang, Selangor, Malaysia. The development is now a thriving locality serving as the residential, commercial and leisure hub of Klang. Apart from integrated townships, WCT's property development portfolio also includes luxury homes, high-rise residences, and integrated commercial developments spread across Klang Valley, Kota Kinabalu in Sabah, and Medini, Iskandar Puteri in Johor, Malaysia.

开创均衡生活

WCT 多年作为承包商的宝贵经验促使该公司扩展到房地产开发。在1997年，集团在马来西亚雪兰莪巴生武吉丁宜镇，推出第一项综合城镇发展计划。如今发展蓬勃的武吉丁宜镇已俨然成为巴生集住宅、商业和休闲于一体的发展据点。除了发展综合城镇，WCT 也在巴生河流域、沙巴亚庇和马来西亚柔佛依斯干达美迪尼，开发高尚住宅、高楼住宅、商业与工业发展计划。

INTEGRATED TOWNSHIPS 综合城镇

52

Bandar Bukit Tinggi, Klang, Selangor, Malaysia
武吉丁宜镇, 巴生, 雪兰莪, 马来西亚

The Bandar Bukit Tinggi integrated township is WCT's property flagship in the South of Klang. Spread over 1,340 acres, Bandar Bukit Tinggi (BBT) is home to three major townships known as Bandar Bukit Tinggi 1 (BBT 1), Bandar Bukit Tinggi 2 (BBT 2) and Bandar Parklands. This self-sufficient township features residential developments, commercial hubs, excellent road connectivity and an extensive list of facilities and amenities anchored by the presence of Première Hotel Klang, BBT ONE The Towers Offices, Bukit Tinggi Shopping Centre, national schools, and hypermarkets like Tesco and Giant. Bandar Bukit Tinggi's strategic location has transformed it into a bustling township that is home to approximately 90,000 residents.

武吉丁宜综合城镇是 WCT 在巴生南部的旗舰房地产项目。武吉丁宜镇总面积达1千340英亩，由三大区域组成，即武吉丁宜第一区、第二区及柏兰镇。WCT 成功将武吉丁宜镇打造成为自给自足的城镇，因为整个武吉丁宜镇包含住宅发展、商业枢纽、卓越的交通枢纽与衔接路线、全方位公共设施和完善设备，例如巴生鼎峰酒店、BBT ONE The Towers 办公大楼、武吉丁宜购物中心、学校及霸级市场（特易购和巨人霸级市场）。屹立在策略地点的武吉丁宜镇，凭借种种优势，成功转型至充满活力、家喻户晓的城镇，如今是大约9万名居民的家园。



Bandar Parklands, Klang, Selangor, Malaysia
柏兰镇, 巴生, 雪兰莪, 马来西亚

INTEGRATED DEVELOPMENTS 综合发展



Paradigm Johor Bahru, Johor, Malaysia
新山佰乐泰, 柔佛, 马来西亚

WCity OUG @ Kuala Lumpur Malaysia

The WCity OUG @ Kuala Lumpur is a sustainable 63-acre new township designed for inclusive and multi-generational communities. The masterplan emphasises on walkability and connectivity ("connected living") so residents will be able to enjoy living in nature with the inclusion of the central park and urban forest while still able to have the convenience of the retail village nearby.

The masterplan for WCity OUG @ Kuala Lumpur envisions a new vibrant destination that is conducive to live, socialise, work, shop and be entertained at the convenience of a single location. From amazing new infrastructures to amenities, the WCity OUG @ Kuala Lumpur is the hip new address in town.

Paradigm Johor Bahru Johor, Malaysia

This 13-acre integrated development in the vibrant hub of Skudai district comprises the 7-storey Paradigm Mall Johor Bahru spanning over 1.3 million square feet of retail space; an upscale select-service hotel Hyatt Place Johor Bahru and Paradigm Residence Johor Bahru.

Paradigm Johor Bahru is strategically located within a 10-minute drive from Johor Bahru City Centre with direct access to major highways (Skudai Highway, Pasir Gudang Highway, North-South Highway, and Second Link Expressway) combining lifestyle and leisure, from a shopper's haven at Paradigm Mall Johor Bahru, modern hospitality at its best for staying guests at Hyatt Place Johor Bahru, Paradigm Mall to new urban living at Paradigm Residence Johor Bahru.

新山佰乐泰 柔佛, 马来西亚

这个13英亩的综合发展项目位于繁华的士姑来区中心, 7层高的新山佰乐泰商场占地超过130万平方英尺, 是一家提供高档精选服务的凯悦嘉轩酒店和新山 *Paradigm Residence*。

新山佰乐泰距离柔佛州新山市中心约10分钟的车程, 可直达主要的高速公路(士姑来高速公路, 巴西古当高速公路, 南北大道高速公路及马新第二通道高速公路)。它结合了生活和休闲方式, 从购物天堂的新山佰乐泰商场, 为入住客人提供热情款待的新山佰乐泰商场凯悦嘉轩酒店以及城市生活的新山 *Paradigm Residence*。

吉隆坡W 都市华联 马来西亚

吉隆坡WCity OUG是一座占地63英亩的永续新城镇, 专为高度包容性的多代社区而设计。其总体规划强调步行性和连通性("互联生活"), 并包含中央公园和城市森林, 让居民能同时享受贴近大自然的生活以及附近零售村所带来的便利。

WCity OUG的总体规划以建设一个充满活力, 方便居民生活、社交、工作、购物和娱乐的住处为愿景。从令人惊叹的新基础设施至便利设施, 吉隆坡WCity OUG无疑是城中最时尚的新地点。



W City Larkinton

Johor Bahru, Malaysia

Spanning 68 acres of prime freehold land in JB city, facing the prestigious 18-hole Johor Golf and Country Club, it's more than just a development — it's a vibrant tapestry of lifestyle, entertainment, art, culture, and ideas. From serviced apartments and luxury residences to a neighborhood mall, convention centre, business tower, and leisure hotels, W City Larkinton is a curated collection designed to empower lifestyles and enrich lives.

W City Larkinton

新山, 马来西亚

这片占地68英亩的新山市黄金永久业权土地，面向著名的18洞柔佛高尔夫乡村俱乐部，不仅仅是一个开发项目，而是一个完美融合了生活、娱乐、艺术、文化和思想的地方。从服务式公寓和豪华住宅，到社区购物中心、会议中心、商务大厦和休闲酒店，W City Larkinton 应有尽有。这是一个精心策划的成果，旨在提升生活质量，并丰富人们的日常生活。

LUXURY HOMES 高尚住宅



d'Laman Greenville, Bukit Tinggi, Klang, Selangor, Malaysia
d'Laman Greenville 住宅区, 武吉丁宜, 巴生, 雪兰莪, 马来西亚



d'Banyan Residency @ Sutera Harbour, Kota Kinabalu, Sabah, Malaysia
d'Banyan Residency @ Sutera Harbour, 亚庇, 沙巴, 马来西亚

WCT's successful venture into the development of exclusive residences has resulted in d'Laman Greenville in Klang, Selangor and d'Banyan Residency @ Sutera Harbour in Kota Kinabalu, Sabah.

Located adjacent to the thriving Bandar Bukit Tinggi township of Klang, d'Laman Greenville features 266 units of contemporary semi-detached and bungalow homes. Completed in 2017, the development sprawls across 56 acres of prime land and offers residents an exclusive clubhouse, a 3-acre scenic pond and a nature walk path.

The d'Banyan Residency @ Sutera Harbour is set in the heart of the illustrious Sutera Harbour Marina in Kota Kinabalu, Sabah. Sculpted around the manicured fairways of a golf course, the development is influenced by a tropical theme and features mixed residential units with resort facilities. The project was completed in 2012.

WCT 成功推介位于雪兰莪州巴生的 *d'Laman Greenville* 及位于沙巴州亚庇的 *d'Banyan Residency @ Sutera Harbour*，正式拉响了进军住宅房地产业的号角。

毗邻在巴生武吉丁宜镇的 *d'Laman Greenville*，建有266间高尚半独立式及独立式洋房。总发展面积达56英亩的 *d'Laman Greenville*，位于城中绝佳地点，并有居民专属的俱乐部、占地3英亩风景优美的池塘及天然人行道在2017年竣工。

屹立在沙巴亚庇 *Sutera* 海港码头中央地带的 *d'Banyan Residency @ Sutera Harbour*，被草地修剪整齐的高尔夫球场围绕，是一处充满热带雨林风味的度假式综合住宅区。此工程已在2012年完成。

HIGH-RISE RESIDENCES 高楼住宅





1Medini and Medini Signature Development

Bandar Medini Iskandar, Iskandar Puteri, Johor, Malaysia

In early 2012, WCT set its sights on the Medini region and made a successful foray by launching 1Medini Residences – the very first high-rise residential towers in Medini. The building features sleek, sophisticated layouts with quality finishing and top-notch facilities and amenities. The double-volume ceilings create a spacious feel, while the sky gardens offer breathtaking views of the Straits of Johor and Singapore skyline.

1Medini is also integrated with the annexed retail podium called 1Medini Hub that consists of 16 retail outlets, 2 levels of offices, and 18 units of exclusive garden villas on the podium top, known as the 1Medini Garden Villas. Apart from the spacious living area, each 1Medini Garden Villa unit comes with its own private outdoor garden.

Riding on the resounding success of 1Medini, WCT launched Medini Signature, which is built adjacent to the 1Medini development. The 456-unit prestigious apartment has a gross development value of RM493 million and was completed in 2017.

1Medini 及 Medini Signature 发展计划

依斯干达美迪尼城，依斯干达公主城，柔佛，马来西亚

早在2012年，WCT 独具慧眼，决定在高发展潜能的美迪尼，推出第一栋高楼住宅大楼 – 1Medini Residences，并获得热烈回响，更成为城中焦点。这栋外形时髦、高雅的高楼住宅大楼，搭配精致的室内装潢和先进设备，其双层式空间的天花板营造更宽阔的居住空间，以及其顶楼花园可让人享受柔佛海峡及新加坡的天际线美景。

1Medini 也设有名为“1Medini Hub”零售平台，有16间零售单位、2层办公单位和在平台顶楼处建有18间高级花园式别墅，名为“1Medini”花园式别墅。每一间居住空间宽敞的“1Medini”花园式别墅单位，更有私人户外花园。

1Medini 获得空前的成就，WCT 顺势推出另一栋高楼住宅计划 – Medini Signature，毗邻 1Medini Residences。这栋建有456间高级单位，发展总值高达4亿9千3百万令吉的高楼住宅已在2017年完成。

Sapphire Paradigm

Petaling Jaya, Selangor, Malaysia

This stylish single tower residence offers a modern lifestyle within close proximity to amenities alongside the Paradigm Mall, the New World Hotel and the MSC-status corporate spaces of The Ascent office tower.

Sapphire Paradigm is a 29-storey high-rise comprising of 229 chic residential units. It features sky deck facilities with 30-m infinity pool, Jacuzzi and a glass walled floating gymnasium facing the amazing skyline view of north Petaling Jaya and Kuala Lumpur city.

Each floor of this contemporary haven comprises 10 units with 4 lifts, 3-tier access control for high security and a sophisticated common entrance, ideally designed for the trendy urbanites.

Sapphire Paradigm

八打灵再也, 雪兰莪, 马来西亚

这座时尚单塔公寓提供现代化的生活方式，附近的设施有佰乐泰商场、新世界酒店以及多媒体超级走廊计划 *The Ascent* 企业办公大楼。

Sapphire Paradigm 是一栋29层拥有229个时尚住宅单位的高楼，设有空中观景台和30米无边泳池、按摩浴缸、玻璃浮动健身房，可以俯瞰八打灵再也北区和吉隆坡的天际。

这个现代化公寓每层包含10个单位和4个电梯、高安全性三层访问控制、精致的公共入口，非常适合时尚的都市人。





Renai Jelutong Residences, Bukit Jelutong, Shah Alam, Selangor, Malaysia
Renai Jelutong Residences, 武吉日落洞, 沙亚南, 雪兰莪, 马来西亚



The Azure Residences, Paradigm Petaling Jaya, Selangor, Malaysia
The Azure Residences, 八打灵再也伯乐泰, 雪兰莪, 马来西亚



Waltz Residences, WCity OUG, Kuala Lumpur, Malaysia
Waltz Residences, WCity OUG, 吉隆坡, 马来西亚



Impiria Residensi, Bandar Bukit Tinggi 2, Klang, Selangor, Malaysia
Impiria Residensi, 武吉丁宜镇第二区, 巴生, 雪兰莪, 马来西亚



Paradigm Residence, Paradigm Johor Bahru, Johor, Malaysia
Paradigm Residence, 新山佰乐泰, 柔佛, 马来西亚



The Maple Residences

WCity OUG @ Kuala Lumpur, Malaysia

This freehold residential condominium in Taman OUG, Kuala Lumpur is part of WCity OUG @ Kuala Lumpur where live, work and play interact daily.

Comprising three towers at 32, 41 and 51 floors, the Maple Residences is a provisional GreenRE Bronze certified residential project and offers expansive luxurious facilities and choice of single and dual-key homes.

The Maple Residences

WCity OUG, 吉隆坡, 马来西亚

这座位于吉隆坡 Taman OUG 的永久地契住宅公寓是属于 WCity OUG @ Kuala Lumpur 生活、工作和娱乐互动的一部分。

Maple Residences 由三座塔楼组成，分别为 32 层、41 层和 51 层，是一个获得临时 GreenRE 铜级认证的住宅项目。该项目提供宽敞豪华的设施，并包括单钥匙和双钥匙的住宅选择。



Pavilion Mont' Kiara

Kuala Lumpur, Malaysia

The newest addition to the international vibrancy of Mont' Kiara is Pavilion Mont' Kiara, placing individuals within a cosmopolitan neighbourhood that champions walkable living and hosts a variety of lifestyle, retail, and dining options for unparalleled convenience.

Pavilion Mont' Kiara is home to 336 exclusive high-rise residences with sizes ranging from 1,000 sq.ft to 6,049 sq.ft and 5 private villas with spaces of over 5,000 sq.ft.. It was awarded the provisional GreenRE Silver certification in the Residential Category by GreenRE Sdn Bhd.

Pavilion Mont' Kiara

吉隆坡, 马来西亚

*Pavilion Mont' Kiara*是满家乐（Mont' Kiara）这个充满国际氛围的地区中的全新高级公寓，为人们提供一个倡导可步行生活、支持多元化生活方式、拥有各种零售和餐饮选择的超凡便利的国际化社区。

*Pavilion Mont' Kiara*拥有336间面积在1,000平方英尺到6,049平方英尺之间 的独特高层住宅，以及5栋面积超过5,000平方英尺的私人别墅。该项目在住宅类别中获得了GreenRE Sdn Bhd颁发的临时GreenRE银级认证。



Adison, W City Larkinton

Johor Bahru, Malaysia

Adison is W City Larkinton's first phase of development, a collection of compact serviced apartments anchored by Adison Shop stylish retail spaces. Adison exudes the vibrant energy of urban living and is located just 10 minutes from Singapore.

Adison offers three different unit types, with a built-up area ranging from 501sq. ft to 961sq. ft, which comprise a studio unit, a 2-bed-1-bathroom unit, and a 2-bed-2-bathroom unit.

Adison, W City Larkinton

新山, 马来西亚

Adison 是WCity Larkinton开发项目的第一阶段，其中包括一系列紧凑型服务式公寓以及作为主力店的Adison Shop 时尚零售空间。*Adison* 散发着都市生活的活力，距离新加坡仅10分钟车程。

Adison 提供三种不同的户型，建筑面积从501平方英尺到961平方英尺不等。其中户型包括一室公寓、两室一卫单位及两室两卫单位。



Adenia Apartments

Bandar Parklands, Klang, Selangor, Malaysia

Located at the matured Bandar Parklands, Klang, Adenia Apartments is the perfect residence for a lifestyle of modernity and is surrounded by a host of ready amenities for your convenience. The apartment comprises 181 units in a single 22-floor tower with a variety of amenities which includes a 25m-length pool, children's pool, sun deck, pool deck, children's playground, garden, surau, multipurpose hall with badminton court, and gymnasium.

Each unit is designed with a built-up of 915 square feet with three bedrooms and two bathrooms as well as two covered parking bays with direct access to the lift lobby. The development is complemented by a range of security comforts, consisting of a 24-hour security patrol, Vehicle Access Control and CCTV at the Guardhouse.

Adenia Apartments

柏兰城, 巴生, 雪兰莪, 马来西亚

Adenia Apartments位于巴生发展成熟的Bandar Parklands，周围设有许多为居民提供便利的设施，是个适合现代生活方式的完美居所。该22层楼高的公寓中拥有181个单位，并为住户提供各式各样的便利设施，包括25米长的游泳池、儿童游泳池、阳光甲板、泳池甲板、儿童游乐场、花园、祈祷室、具备羽毛球场的多用途礼堂和健身房。

每个单位的实用面积为915平方英尺，设有三间卧室和两间浴室。每个单位亦可获得两个可直通电梯大堂的有盖停车位。该公寓还配备了一系列安全设施，包括24小时巡逻、车辆出入控制和警卫室的闭路电视系统。



Trifolis Apartment, Bandar Bukit Tinggi 2, Klang, Selangor, Malaysia
Trifolis Apartment, 武吉丁宜镇第二区, 巴生, 雪兰莪, 马来西亚



Aronia Apartments, Bandar Parklands, Klang, Selangor, Malaysia
Aronia Apartments, 柏兰城, 巴生, 雪兰莪, 马来西亚



Azaria Apartments, Bandar Parklands, Klang, Selangor, Malaysia
Azaria Apartments, 柏兰城, 巴生, 雪兰莪, 马来西亚

COMMERCIAL 商业发展



- 1 The Landmark**
Bandar Bukit Tinggi 2, Klang,
Selangor, Malaysia
The Landmark
武吉丁宜镇第二区, 巴生,
雪兰莪, 马来西亚

- 2 1Medini Hub**
Bandar Medini Iskandar,
Iskandar Puteri,
Johor, Malaysia
1Medini Hub
依斯干达美迪尼城,
依斯干达公主城,
柔佛, 马来西亚

- 3 BBT ONE The Towers**
Klang, Selangor, Malaysia
BBT ONE The Towers
办公大楼
巴生, 雪兰莪, 马来西亚



INVESTMENT AND MANAGEMENT

投资及 管理



Managing Values

The group first ventured into property investment by building and owning the Bukit Tinggi Shopping Centre in Klang, Malaysia back in 2007. Since then, WCT had invested and managed several retail malls, such as Paradigm Malls in Petaling Jaya and Johor Bahru, gateway@klia2 (Airport Mall) in Sepang, SkyPark Terminal in Subang and hotels, including Première Hotel in Klang and Le Méridien Petaling Jaya.

价值管理

WCT 集团是在2007年建立及拥有马来西亚武吉丁宜购物中心下正式涉足产业投资。至今 WCT 已投资并管理数间购物商场，例如在八打灵再也及新山的佰乐泰商场，gateway@klia2 (机场购物商场)，位于Subang 的SkyPark Terminal与巴生鼎峰酒店及八打灵再也艾美酒店。

SHOPPING MALLS 购物商场



69

Paradigm Mall Petaling Jaya Selangor, Malaysia

Paradigm Mall Petaling Jaya is part of the RM1.8 billion Paradigm integrated commercial development. With a gross built-up area of 1 million sq ft and a net lettable space of 680,000 sq ft, the iconic lifestyle mall is strategically located along the Damansara Puchong Highway (LDP) and stands out with its intricate geometric design. Paradigm Mall Petaling Jaya attracts over 15 million visitors a year, providing the community a rich and comprehensive customer experience through its mix of local and international retail shops, leisure, entertainment, food and beverage outlets.

八打灵再也佰乐泰商场 雪兰莪，马来西亚

八打灵再也佰乐泰商场是发展总值高达18亿令吉的佰乐泰综合商业发展计划的一部分，总建筑面积高达100万平方尺，而总出租面积则有68万平方尺。外观采用复杂几何设计的八打灵再也佰乐泰商场，屹立在白沙罗蒲种大道极具策略性的位置，也是当地一栋极具标志性的建筑物。每年有超过1千500万人次到访的八打灵再也佰乐泰商场内有国际品牌零售商店、休闲特区、娱乐区及餐饮区，可为到访人士提供全方位及绝佳的购物体验。



gateway@klia2 (Airport Mall) Sepang, Selangor, Malaysia

The modern gateway@klia2 is WCT Group's third retail project. gateway@klia2 is uniquely designed and built with a shopping mall with airport concept and is located between the airport drop-off point and KLIA Terminal 2. With a net lettable space of 360,000 sq ft spanning over 4 levels, this LEED Silver Certified mall features 5,600 parking bays and is a bustling integrated transportation hub for taxis, KLIA Express, rented cars and buses.

gateway@klia2 (机场购物商场) 雪邦, 雪兰莪, 马来西亚

风格时尚的 gateway@klia2 商场是 WCT 旗下第三项零售发展计划。gateway@klia2 是一栋独特设计与建造, 并采用机场概念的购物商场, 位于机场下客区与吉隆坡国际机场第2号航站楼主终站之间。4层楼的 gateway@klia2 也是一栋总出租面积高达36万平方尺、全冷气设备的零售发展计划, 这个拥有 LEED 银级认证的商场不仅有着5千600个停车位, 更是一个繁忙及活跃的综合交通枢纽, 可到此乘搭的士、机场直透快铁、出租汽车及巴士。



SkyPark Terminal, Subang, Malaysia
空中花园航站楼, 梳邦, 马来西亚



Bukit Tinggi Shopping Centre, Klang, Selangor, Malaysia
武吉丁宜购物中心, 巴生, 雪兰莪, 马来西亚



Paradigm Mall Johor Bahru

Johor, Malaysia

Paradigm Mall Johor Bahru opened its doors on 28 November 2017. Located along Jalan Skudai, the seven-storey mall houses 1.3 million sq ft. of retail space. Paradigm Mall Johor Bahru is part of a carefully-crafted 13-acre integrated development that include Hyatt Place Johor Bahru and Paradigm Residence Johor Bahru.

新山佰乐泰商场

柔佛, 马来西亚

新山佰乐泰商场于2017年11月28日开业。位于士古来路的7层楼商场，零售店铺总面积达130万平方尺。新山佰乐泰商场是精心打造的13英亩综合开发项目的一部分，后者将包括新山凯悦嘉轩酒店和新山 *Paradigm Residence*。



COMMERCIAL PROPERTY 商业地产

The Ascent (Corporate Office Tower) Paradigm Petaling Jaya, Selangor, Malaysia

The Ascent at Paradigm Petaling Jaya is a 32-storey modern Class A corporate office tower with a total net lettable area of 520,000 sq ft. Built to MSC Cybercentre Status specified accreditation, it is uniquely planned and engineered for efficiency at work.

The Ascent features flexible office units ranging from 5,000 sq ft to 18,000 sq ft and it is equipped with state-of-the-art mechanical and electrical services.

The Ascent (企业办公大楼) 八打灵再也佰乐泰， 雪兰莪，马来西亚

位于八打灵再也佰乐泰的 *The Ascent* 是一栋高32层的现代化A级企业办公大楼，总出租面积达52万平方尺，符合多媒体超级走廊数码中心地位和认证，是一栋专为提高工作效率而建及启用的大楼。

The Ascent 具伸缩性及无柱设计的风格，配备先进的机械及电机服务，每单位建筑面积介于5千平方尺至1万8千平方尺之间。



HOSPITALITY 酒店

74



Première Hotel

Klang, Selangor, Malaysia

Première Hotel marks WCT Group's first venture into the hospitality business. Launched in October 2010, the hotel features 250 rooms and suites, 3 Executive Club floors and is located within the vibrant township of Bandar Bukit Tinggi in Klang, Malaysia. Ranked number one in Klang by TripAdvisor, the hotel offers guests various amenities and facilities within the hotel itself.

鼎峰酒店

巴生, 雪兰莪, 马来西亚

在2010年10月竣工的鼎峰酒店, 象征了 WCT 集团正式迈入礼待业务。这间酒店备有250间客房及套房, 以及多达三层的行政俱乐部, 屹立在充满生机及发展蓬勃的马来西亚巴生武吉丁宜镇内。鼎峰酒店也获得 *TripAdvisor* 评为巴生区排名第一的酒店, 可为住客提供多元选择的设施和设备。



Le Mèridien, Petaling Jaya Hotel, Petaling Jaya, Selangor, Malaysia

This hotel is part of WCT's Paradigm integrated commercial development and features 300-guestroom or suites, three on-site restaurants, a rooftop pool, a fitness centre, a pillarless grand ballroom and 12 meeting spaces.

八打灵再也艾美酒店 八打灵再也佰乐泰, 雪兰莪, 马来西亚

这家酒店是WCT旗下Paradigm综合商业开发项目的一部分，设有300间客房或套房、三间内部餐厅、屋顶游泳池、健身中心、无柱式大宴会厅和12个会议空间。

Hyatt Place Johor Bahru Paradigm Mall Johor Bahru, Malaysia

Hyatt Place Johor Bahru Paradigm Mall in Johor Bahru is part of the Paradigm Johor Bahru development. Being the first Hyatt Place hotel in Johor Bahru, the hotel represents the Hyatt Place brand's intuitive design, casual atmosphere and practical amenities, such as free Wi-Fi and 24/7 conveniences to create an easy to navigate experience for multi-tasking travellers. The 202-room hotel features spacious, modern guestrooms with separate spaces to sleep, work and play, as well as Hyatt Place's signature Cozy Corner sofa-sleeper.

新山佰乐泰广场凯悦嘉轩酒店 新山，马来西亚

位于新山佰乐泰广场的凯悦嘉轩酒店是WCT集团在新山的综合发展项目的一部分。作为新山第一家凯悦嘉轩酒店，该酒店代表了凯悦嘉轩品牌直观的设计、休闲的氛围和实用的设施，例如免收费Wi-Fi和24小时的便利设施，为身兼多职的旅客提供轻松、方便的导航体验。这家酒店设有202间宽敞、现代化的客房，并配有独立的睡眠、工作和娱乐空间；当然，还有凯悦嘉轩酒店标志性的Cozy Corner沙发床。



BUSINESS AVIATION 航空业务



SkyPark Aviation Group Subang, Selangor, Malaysia

The SkyPark Aviation Group services and facilities at the Sultan Abdul Aziz Shah Airport, Subang offers a one-stop and comprehensive list of private aviation handling amenities. The services comprise fixed-based operation services, short and long-term integrated hangarage facilities, apron space for aircraft positioning and parking, event spaces and other aircraft maintenance services.

SkyPark 航空集团 (SkyPark Aviation Group) 马来西亚雪兰莪梳邦

位于梳邦苏丹阿都阿兹沙 (Sultan Abdul Aziz Shah) 机场的 SkyPark 航空集团服务和设施提供一站式及全面的私人航空处理设施。其服务包括固定运营服务、短期与长期的综合机库设施、用于飞机定位和停放的停机坪空间、活动空间和其他飞机维修服务。

CONCESSIONS 特许经营资产



78

gateway@klia2 Sepang, Selangor, Malaysia

gateway@klia2 is part of WCT's long-term concession with Malaysia Airports Holdings Berhad (MAHB). It is the Group's first concession in Malaysia which began in August 2011 and is scheduled to run for 25 years with an option to extend for 10 more years. The contract covers the building and maintenance of gateway@klia2 within the Kuala Lumpur International Airport 2 (klia2), and business successfully commenced on 2 May 2014. In May 2024, a supplemental agreement was signed with MAHB to extend the concession period by 22 years upon the expiry of the first 10-year extension period, which concludes in August 2047.

gateway@klia2 雪邦，雪兰莪，马来西亚

gateway@klia2是 WCT 与马来西亚机场控股(MAHB)发展特许经营资产的长期计划之一，也是 WCT 于2011年8月，在马来西亚第一项特许经营资产项目，双方签署的特许经营合约长达25年，并可选择延长合约多10年。此特许经营工程合约涵盖建造及管理位于吉隆坡第二国际机场内的 gateway@klia2 购物商场。gateway@klia2 购物商场是在2014年5月2日正式开业。WCT于2024年5月与MAHB签署补充协议，将特许经营期在第一个10年延长期（2047年8月结束）到期后再延长22年。

CONTACT US 联络我们



www.wct.com.my

WCT Holdings Berhad
 WCT_Holdings

HEAD OFFICE 总部

Malaysia

WCT Holdings Berhad (930464-M)

B-30-01, The Ascent, Paradigm,
No. 1, Jalan SS7/26A, Kelana Jaya,
47301 Petaling Jaya

Selangor Darul Ehsan, Malaysia

Tel: +(603) 7806 6688

Fax: +(603) 7806 6633

Email: enquiries@wct.my / enquiries.construction@wct.my

PROPERTY DEVELOPMENT 房地产发展

WCT Land Sdn Bhd

Head Office

B-19-1, Level 19, The Ascent, Paradigm,
No. 1, Jalan SS7/26A, Kelana Jaya,
47301 Petaling Jaya

Selangor Darul Ehsan, Malaysia

Tel: +(603) 7681 7878

Fax: +(603) 7681 7880

Email: wctl.csu@wct.my

SHOPPING MALLS 购物商场

WCT Malls Management Sdn Bhd

Head Office

B-29-03, The Ascent, Paradigm,
No. 1, Jalan SS7/26A, Kelana Jaya,
47301 Petaling Jaya,

Selangor Darul Ehsan, Malaysia.

Tel: +(603) 7610 3880

Fax: +(603) 7610 3877

Email: WCTM.AP@wctmalls.wct.my

BUSINESS AVIATION 航空业务

SkyPark Fixed Base Operation

Head Office

M17, SkyPark Terminal
Sultan Abdul Aziz Shah Airport,
47200 Subang,

Selangor Darul Ehsan, Malaysia

Plus Code: 4HM3 + 4Q

Tel: +(603) 7846 2400

Fax: +(601) 2239 3774

Email: operations@skyparkfbomy.com

HOSPITALITY 酒店

Première Hotel

Bandar Bukit Tinggi 1/KS6, Jalan Langat,
41200 Klang, Selangor Darul Ehsan, Malaysia

Tel: +(603) 3325 6868

Fax: +(603) 3325 6869

Email: enquiry@premiere-hotels.wct.my

www.premiere-hotels.com

PremiereHotels

Premiere_Hotel

Le Méridien Petaling Jaya

No. 1, Jalan SS7/26A, Kelana Jaya, 47301
Petaling Jaya, Selangor Darul Ehsan, Malaysia.

Tel: +(603) 7682 0000

Fax: +(603) 7682 0088

Email: marketing@lemeridienpj.com

LeMeridienPetalingJaya

[lemeridienpetalingjaya](https://www.instagram.com/lemeridienpetalingjaya)

Hyatt Place Johor Bahru Paradigm Mall

Paradigm Mall, Jalan Mewah Ria 2,
Taman Bukit Mewah, Johor Bahru, Malaysia

Tel: +(607)291 1234

Fax: 07-2911235

Email: hyattplacejohorbahru@hyatt.com

HyattPlaceJohorBahruParadigmMall

[hyattplacejbparadigmhall](https://www.instagram.com/hyattplacejbparadigmhall)

www.wct.com.my